

Cord Guide

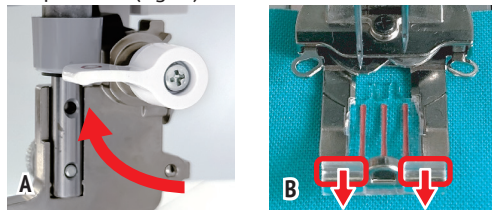
Item No: A-D9-12A

By using the cord inserts for the Primo swing foot along with the cord guide, the creative cover stitches are given an unmistakable three-dimensional, pintuck-like decorative look. The cord guide prevents the cords from tangling and ensures correct guidance. In contrast to the normal cord foot, the fabric takes centre stage here.

Cording foot	Stitch	Needle Position	Speed Selector	Stitch Length
2.5 mm/yellow	Swing- or Serpentine stitch, triple	C1+C2+C3	medium	3 mm
2 mm/pink	Swing- or Serpentine stitch, narrow	C1+C2 or C2+C3		
1.6 mm/light blue				

HOW TO SET UP THE MACHINE

- Put the wiper positioning lever in the horizontal position (fig. A)
- Raise the foot, press the needle positioning button until the needles are in the highest position and the swing foot wipers are open.
- Grasp the insert by the right and left tabs (marked red - B) and pull it off the foot.



Attaching the cord insert

- Place a test piece of fabric under the presser foot before attaching the insert.
- Raise the presser foot and slide the insert onto the presser foot (A) until the insert clicks into place and sits flush against the main body of the foot. (B and C).



NOTE: If the insert is in the correct position (B+C), it will click into place. Otherwise you will feel some resistance. If this is the case, remove the insert and reinsert it. **Do not force the insert into position;**

Verify that the insert is properly positioned by lifting the presser foot and ensuring it is aligned flush with the main body of the foot, rather than angled downwards.

Attaching the cord guide

- The machine should not be threaded.
- Place the cord guide on the sewing table and align the slot with the screw positions furthest away from the presser foot. (A)
- Fix the cord guide with both fixing screws (in the machine's accessory compartment) and align the holes at the tip of the cord guide with the holes on the cord insert (B).
NOTE: If you place fabric under the presser foot and the tip of the cord guide, you will be able to see the guides better, making alignment easier.
- Raise the presser foot and feed the cords through each hole of the cord guide and further under the presser foot without threading the cords into the two holes of the cord insert. Only place them under the foot. Align the cords well with the openings of the cord insert. Place 5 cm of cord behind the presser foot and lower the presser foot (C).
NOTE: The cords should form a straight line from the openings of the cord guide to the cord insert. (D) If necessary, make adjustments to the position of the cord guide.
- To ensure that the needles are on the outer edges of the cords and not in the cord, lower the needles using the needle position button. (E)
- When the cords are aligned, you can thread the machine. Use the operating instructions and quick threading aid for this.

